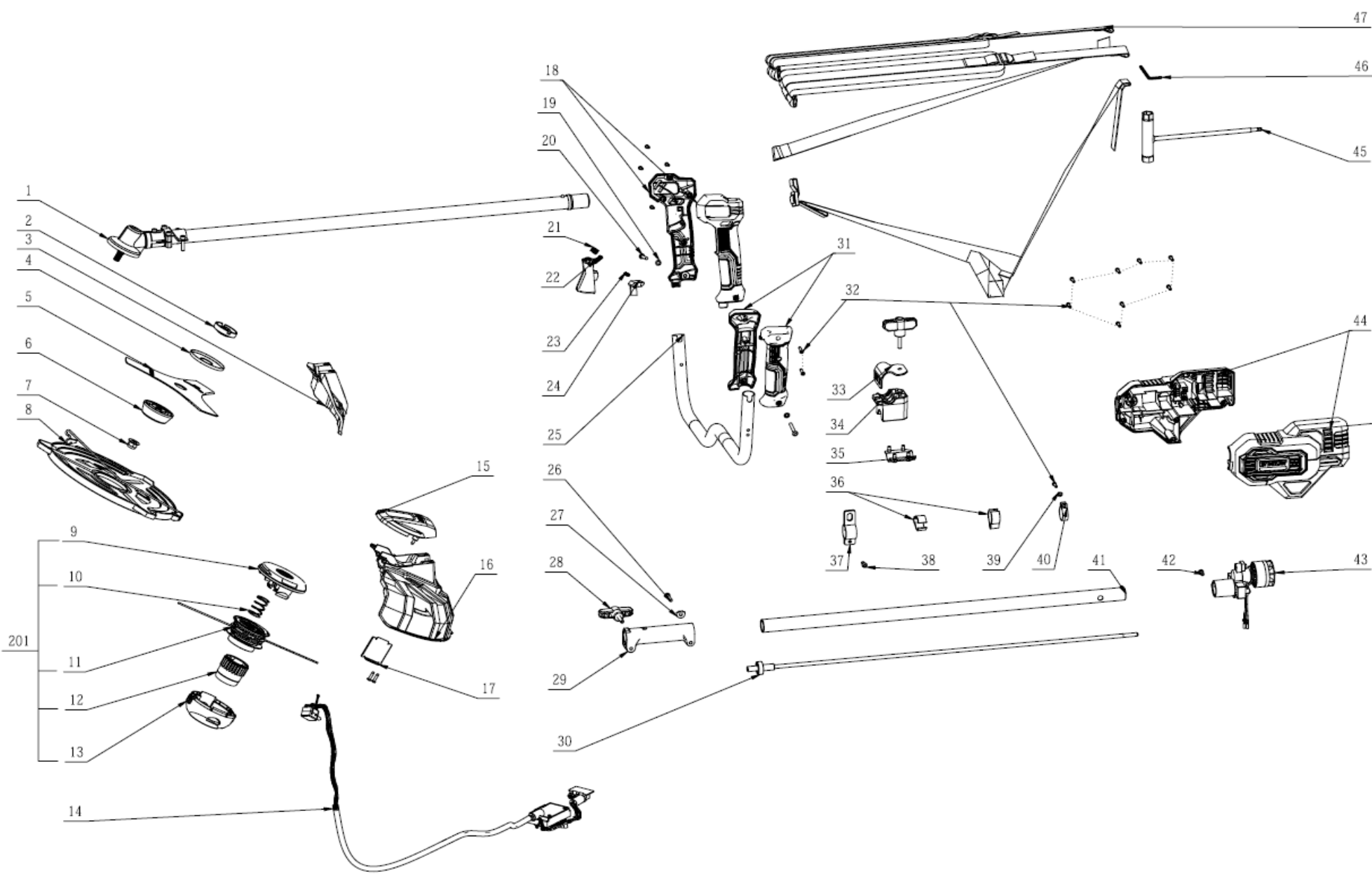


Erbauer EBC18-Li-2
18v Brush Cutter

Parts Manual



| Part ID | Apelson PN | MPN | Part Description |
|---------|--------------|------------|--|
| 1 | GP0000000002 | 2826315002 | ANGLE GEAR |
| 2 | GP0000006313 | 3552509001 | SPLINED FLANGE |
| 3 | GP0000000004 | 2826322001 | GUARD ASSEMBLY |
| 4 | GP0000006314 | 3706103001 | SHIELD |
| 5 | GP0000000006 | 3706855001 | ACCESSORY - BRUSH CUTTER BLADE - 23CM 3T |
| 6 | GP0000000007 | 3421864003 | OUTER FLANGE |
| 7 | GP0000006317 | 5630292001 | LOCKING NUT (LH THREAD) |
| 8 | GP0000000009 | 2824948001 | ACCESSORY - BRUSH CUTTER BLADE COVER |
| 9 | GP0000000010 | 3403128001 | TRIMMER HEAD - TOP COVER |
| 10 | GP0000000011 | 3660735001 | TRIMMER HEAD - COMPRESSION SPRING |
| 11 | GP0000000012 | 2826331002 | TRIMMER HEAD - SPOOL |
| 12 | GP0000000013 | 2824022005 | TRIMMER HEAD - INNER SUPPORT |
| 13 | GP0000000014 | 2824019003 | TRIMMER HEAD - LOWER COVER |
| 14 | GP0000000015 | 2830469001 | CONTROL PCB ASSEMBLY (INC HARNESS) |
| 15 | GP0000000016 | 2826323001 | UPPER GUARD ASSEMBLY |
| 16 | GP0000000017 | 2826324001 | LOWER GUARD ASSEMBLY |
| 17 | GP0000000018 | 3706856001 | WIRE TRIMMING BLADE |
| 18 | GP0000000019 | 2826468001 | HANDLE ASSEMBLY - RH |
| 19 | GP0000000020 | 5650013001 | WASHER |
| 20 | GP0000000021 | 5620584001 | HEXAGON SOCKET SCREW |
| 21 | GP0000000022 | 3660013001 | SPRING |
| 22 | GP0000000023 | 3130001001 | SWITCH TRIGGER |
| 23 | GP0000000024 | 3660427001 | SPRING |
| 24 | GP0000000025 | 3130000001 | LOCK-OFF TRIGGER |
| 25 | GP0000000026 | 3706039001 | CONNECTING TUBE |
| 26 | GP0000000027 | 5620550001 | HEXAGON SOCKET SCREW |
| 27 | GP0000000028 | 3705464001 | WASHER |
| 28 | GP0000000029 | 3403040001 | LOCKING KNOB |
| 29 | GP0000000030 | 3422382002 | JOINT |
| 30 | GP0000000031 | 2824782001 | SHAFT ASSEMBLY |
| 31 | GP0000000032 | 2826469001 | HANDLE ASSEMBLY - LH |
| 32 | GP0000000033 | 5610294001 | TAPPING SCREW |
| 33 | GP0000000034 | 3706852001 | ROTATING PIECE |
| 34 | GP0000000035 | 3422381001 | PIVOT SHOE |
| 35 | GP0000000036 | 2826470002 | STEEL BAR SET |
| 36 | GP0000000037 | 3128375001 | WIRE HOLDER |
| 37 | GP0000000038 | 2824475001 | TUBING CLIP SET |
| 38 | GP0000000039 | 5620018002 | HEXAGON SOCKET SCREW |
| 39 | GP0000000040 | 5650005001 | PLAIN WASHER |
| 40 | GP0000006201 | 3705178001 | LOCKING RING |
| 41 | GP0000000042 | 2826256002 | CONNECTING TUBE |
| 42 | GP0000000043 | 5620050001 | SCREW |
| 43 | GP0000000044 | 2790485002 | MOTOR AND GEARBOX ASSEMBLY |
| 44 | GP0000000045 | 2826292001 | MOTOR HOUSING ASSEMBLY |
| 45 | GP0000000046 | 5680217001 | ACCESSORY - TOOLING - ALLEN KEY |
| 46 | GP0000000047 | 5680235001 | ACCESSORY - TOOLING - BOX SPANNER |
| 47 | GP0000000048 | 3800154001 | ACCESSORY - SAFETY HARNESS |